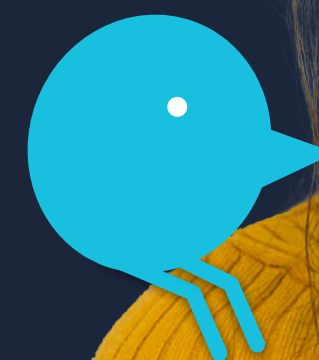




An assessor's guide to **Global AutoCorrect**

This guide explains how Global AutoCorrect software can be helpful for students with additional learning needs who qualify for the Disabled Students' Allowance (DSA).

To get your assessor copy, please visit text.help/dsa-solutions



Guidelines for recommending Global AutoCorrect for DSA students

Global AutoCorrect provides automatic spelling correction, as you type, in any program.

Global AutoCorrect saves time and supports student focus by automatically and intelligently correcting spellings as they type. The discreet tool works to reduce stress and remove interruptions, allowing students to focus on what they want to say.

Breakdown of needs covered

Reading & writing difficulties - including dyslexia, dyspraxia, and other literacy difficulties

Mental health problems - including anxiety, OCD, stress, and working memory difficulty

Cognition & sensory processing - including ASD, ADHD/ADD, epilepsy, fatigue

Where it works:

Global AutoCorrect is available for Windows and macOS. Students can use Global AutoCorrect on their laptop or MacBook.



Learning needs

Reading and writing difficulties

Cognition and sensory processing

[Take a tour](#)

How Global AutoCorrect Helps

Global AutoCorrect can provide support to students who are dyslexic or who experience difficulty in spelling and writing.

It assists in the writing process by providing discreet assistance with spelling and word choice.

Students who have low confidence in writing can focus on developing the content of their ideas without the distraction of spelling errors.

The tool tracks learners' most common spelling errors, helping them to identify patterns and learn from their mistake

Global AutoCorrect helps students who have difficulty maintaining focus, or who are often distracted by spelling errors.

The autocorrection and word choice features help with decision-making and remove interruptions to the writing flow.

Learning needs

Mental health issues

How Global AutoCorrect Helps

Global AutoCorrect helps to address negative self-talk and low confidence regarding writing ability. It does this by removing the red underline approach to spelling correction, and by developing students' spelling and vocabulary. This helps to reduce the stress students may associate with writing.

The vocabulary feature helps students with memory recall and adds clarity to their writing. They no longer have to simplify their language to use only words they know how to spell.

Manual spell-checking requires lots of small decisions, which Global AutoCorrect reduces.

Download a quick
reference card

[Desktop](#)

For more information on Texthelp tools for DSA students

visit text.help/dsa-solutions or
email us at dsagroup@texthelp.com.

