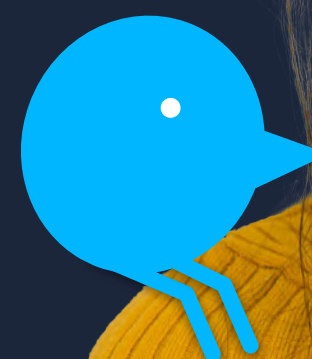




An Assessor's guide to Equatio

This guide explains how Equatio software can be helpful for students with additional learning needs who qualify for the Disabled Students' Allowance (DSA).

To get your Assessor copy, please visit text.help/dsa-solutions



Guidelines for recommending Equatio for DSA students

Equatio is a digital maths toolbar with features to support students with additional learning needs when creating and understanding mathematical equations, formulas and more.

Simply type, handwrite or dictate any expression, and Equatio will convert it to accurate digital maths, which can be added into a Microsoft Word document or Google workspace for education app with a click.

Built on Universal Design for Learning (UDL) principles, Equatio supports various learning styles, and includes features like speech input, freehand drawing and a bank of built-in formulas. These options provide students with more choice in how they demonstrate their understanding of different maths concepts and help to ensure that maths is accessible to all learners.

Where it works:

Equatio is available for Windows, macOS, Google Chrome, iOS and Android. Students can use Equatio on their Chromebook, laptop, MacBook, tablet or phone.



Breakdown of needs covered

- **Reading & writing difficulties** - including dyslexia, dyspraxia dysgraphia and dyscalculia
- **Mental health problems** - including anxiety, OCD and stress
- **Visual impairment** - including blurred vision, visual stress, Irlen Syndrome, poor visual acuity and retinal migraines
- **Motion and dexterity** - including repetitive strain injury, fine motor control issues, and difficulty sitting at a desk
- **Cognition & sensory processing** - including ASD, ADHD/ADD, epilepsy, fatigue
- **Hearing impairment** - students with hearing impairments



Learning needs

Reading and writing difficulties

(including dyslexia, dyspraxia or dyscalculia)

< Take a tour

How Equatio Helps

Maths-to-speech

When used with Read&Write, students can have maths problems read aloud which:

provides auditory support for students with cognitive difficulties.

improves auditory reading speed and productivity as listening to information supports more efficient auditory memory.

aids tracking and makes processing information easier, with the help of dual highlighting.

Speech input

Equatio's Speech Input feature allows students to dictate maths expressions as an alternative to writing.

Prediction

Equatio's built in maths prediction helps students to build complex maths and science notations by typing simple English without spelling errors.

Equatio Mobile

Equatio Mobile allows students to convert handwritten or textbook maths images into accessible documents.

Screen Reader

Equatio's screenshot reader allows students to read and understand inaccessible documents, like PDFs, by reading them aloud.

Learning needs

Reading and writing difficulties

(including dyslexia, dyspraxia or dyscalculia)

[Take a tour](#)

How Equatio Helps

Equatio mathspace

- The web app version of Equatio provides both instructors and students with a blank canvas to express and explore maths concepts in a variety of formats.
- Instructors can use manipulatives to create maths problems with visual representations to support students who struggle with reading.
- Students can use Graphic Organisers like Venn Diagrams, T-Charts and Grids, as well as Equatio's multi-line functionality, to break down maths problems into steps.
- Students can use multiple means of expression, including manipulatives and Freehand Drawing, to explain their thinking in the manner they are comfortable with.

Learning needs

Mental health problems

How Equatio Helps

Prediction

- Maths prediction allows complex maths and science coding to be created without switching programmes, reducing stress for students as they don't need to learn and remember keyboard shortcuts.

Handwriting recognition

- Equatio's handwriting tool enables students to work how they prefer when inputting in a digital format. Students therefore do not need to change their normal way of working, which could reduce anxiety and stress.

Screenshot reader

- Equatio's screenshot reader allows students to proofread a PDF and other previously inaccessible documents. This removes the stress or anxiety associated when working with inaccessible documents.

Learning needs

Visual impairments and visual stress

[Take a tour](#)

How Equatio Helps

Maths-to-speech

When paired with Read&Write, Equatio provides maths-to-speech with dual coloured highlighting to help with proofreading complex maths and science content.

Speech input

Speech input allows students to dictate maths in Equatio, Mathspace and Equatio Mobile, offering an alternative to typing or handwriting maths.

Equatio Mobile

Equatio Mobile allows students to convert handwritten or textbook maths images into accessible documents.

Screen masking

When used with Read&Write, screen masking allows students who require a high contrast background to change the background colour. Colour overlays can help reduce visual stress when proofreading work.

Learning needs

Motion and dexterity

[Take a tour](#)

How Equatio Helps

Equatio Mobile

Equatio Mobile saves time as students can use their smartphone to quickly convert handwritten or textbook printed maths into accessible, spoken maths.

Prediction

Maths prediction, in combination with a keyboard guide/guard, allows those with hand tremors to quickly insert complex maths and science terminology with 60% fewer keystrokes.

Speech input

Equatio's speech input tool helps students who can't or prefer not to use a keyboard, to insert maths and science expressions verbally.

Learning needs

Hearing impairments

(including dyslexia, dyspraxia or dyscalculia)

How Equatio Helps

Maths-to-speech

Dual highlighting allows students to track what maths is being read and edit where necessary, when paired with Read&Write.

Insert text

The insert text tool can be used by teachers to introduce new concepts and lessons to students. Helping to provide context and information to lessons.

**Download a quick
reference card**

[Desktop](#)

[Chrome](#)

For more information on Texthelp tools for DSA students

visit text.help/dsa-solutions or
email us at dsagroup@texthelp.com.

